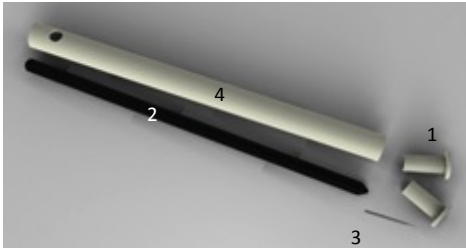


## ALIGNMENT TOOL PARTS

The Becker Model 725/726 Ankle Joint Alignment Tool consists of the following:

1. Alignment bushings (2)
2. Alignment rod (black)
3. Alignment rod point
4. Alignment tube (white)



## OVERVIEW

*For best results, read all instructions carefully before fabrication.*

The Becker Model 725/726 Ankle Joint Alignment Tool simplifies fabrication by facilitating the accurate location of the ankle axis in the negative mold, and providing a means to quickly and accurately locate and remove the ankle joints from the mold during fabrication.

The Alignment Tool is used in two configurations to simplify alignment of the ankle axis in the anatomical mold, and to maintain that alignment during fabrication.

## SETTING THE ANKLE AXIS IN THE NEGATIVE MOLD

Parts required: Alignment rod (2), Alignment rod point (3), Alignment tube (4)

The Alignment Tube (4) serves as a visual reference to help orient the Alignment rod in the mold with respect to the coronal leg axis and the medial border of the foot.

## Assemble the Alignment Tool

1. Assemble the alignment tool by carefully pushing the flat end of the Alignment rod (2) through the  $\frac{1}{4}$ " hole in the Alignment tube (4). Complete assembly by pushing the Alignment rod point (3) into the tapered end of the Alignment rod (2). The complete assembly is shown below.

## Align the Ankle Axis

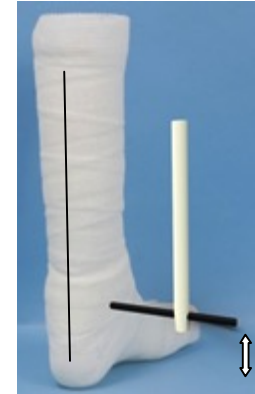
2. Drill a  $\frac{1}{4}$ " hole through the medial side of the negative mold at the distal tip of the medial malleolus. Push the point end of the Alignment rod through the hole in the negative mold until the point contacts the opposing inside surface of the mold. Apply slight pressure to keep the point seated to the mold. Do not push the point through the mold at this time.

## Alignment Tool Assembly



3. Adjust the orientation of the ankle axis in the coronal plane using the Alignment tube (4) as a visual reference. To place the ankle axis in the transverse plane, align the tube parallel with the coronal axis of the mold.

## Coronal Alignment



4. Rotate the Alignment tube into the transverse plane as shown below. Adjust the tibial torsion of the ankle axis by tilting the Alignment tube with respect to the medial border of the foot. Orient the Alignment tube parallel to the line of progression (using the medial border of the foot as your reference) to *mechanically-align* the ankle axis. Orient the Alignment rod parallel with the malleoli to *anatomically-align* the ankle axis.

## Tibial Torsion



### Set the Alignment Rod

5. To determine the Alignment rod hole location on the lateral ankle side of the mold, assertively tap the flat end of the Alignment rod with a hammer. This will drive the Alignment rod point through the opposite side of the mold and indicate the hole location.
6. Remove the Alignment rod and point from the mold and drill a 1/4" hole through the mold.
7. Remove the Alignment rod point and Alignment tube from the Alignment rod. Push the Alignment rod through the mold and fill the mold with plaster to complete the procedure.

### FABRICATION INSTRUCTIONS

Parts required: Alignment rod (2), Alignment bushings (1)

The alignment bushings are intended to hold the Model 725/726 stirrup to the ankle joint body and to accurately orient the ankle joint with respect to the Alignment rod. The Alignment bushings easily slide onto the Alignment rod and permit the ankle joints to be quickly removed from the Alignment rod during fabrication.

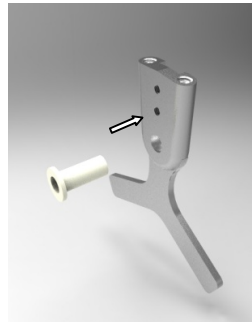
### Assemble the Alignment Tool for Fabrication

*Important: The Model 725/726 metal bushings must be removed from the component prior to this procedure.*

1. Install the Alignment tool bushings by carefully pushing the Alignment bushings through the bushing hole in the ankle joint and stirrup from the non-recessed side of the component body. Note that the bushings fit snugly into the bushing hole and may be damaged if not carefully inserted.

2. Slide the bushing and ankle joint onto the Alignment rod (2). The spacing between the component and the mold will be 1/16" with the Alignment bushing shoulder against the mold. Nylon spacers (not included) may be placed between the alignment bushing and the mold for alternative spacing.

### Insert Alignment Bushing



3. Complete fabrication by contouring the lateral bars and stirrups.

### Complete Fabrication



## Model 725/726

Compact/Modular Double Action  
Ankle Joint

### Alignment Tool INSTRUCTIONS



(800) 521-2192 • (248) 588-7480  
BeckerOrthopedic.com

